



Mill Cottage Ashford in the Water, Peak District National Park, Derbyshire, DE45 1PZ

Saxton Mee

Mill Cottage

Ashford in the Water

Asking Price

£1,150,000

Set in a truly magical position on the edge of the highly sought-after village of Ashford in the Water, Mill Cottage is situated within the Ashford Mill Estate, a hidden oasis and place of utter tranquillity, natural beauty and remarkable heritage.

This stunning five-bedroom, four-bathroom residence is a substantial and beautifully designed family home offering elegance, space and flexibility. Finished to an exceptional standard throughout, Mill Cottage is perfect for family living.

A welcoming entrance hall leads to a warm and inviting family reception room with oak flooring, a cloakroom, WC and boot room. The heart of the home is a spectacular open-plan living kitchen featuring hand-painted cabinetry, a central island, Aga, Fisher & Paykel fridge-freezer, and two arched double doors framing captivating views and opening to the rear garden. The ground floor also offers a formal sitting room with exposed beams and log-burning stove, a dining hall, utility room, WC and both side and rear lobbies.

Accessed via two staircases, the first floor provides a luxurious principal suite with dual-aspect windows, feature fireplace an en-suite bathroom with freestanding bath and separate shower. A further four double bedrooms are served by two additional bathrooms and an en-suite, all elegantly appointed. Externally, a double garage and further off-road parking complete the offering.

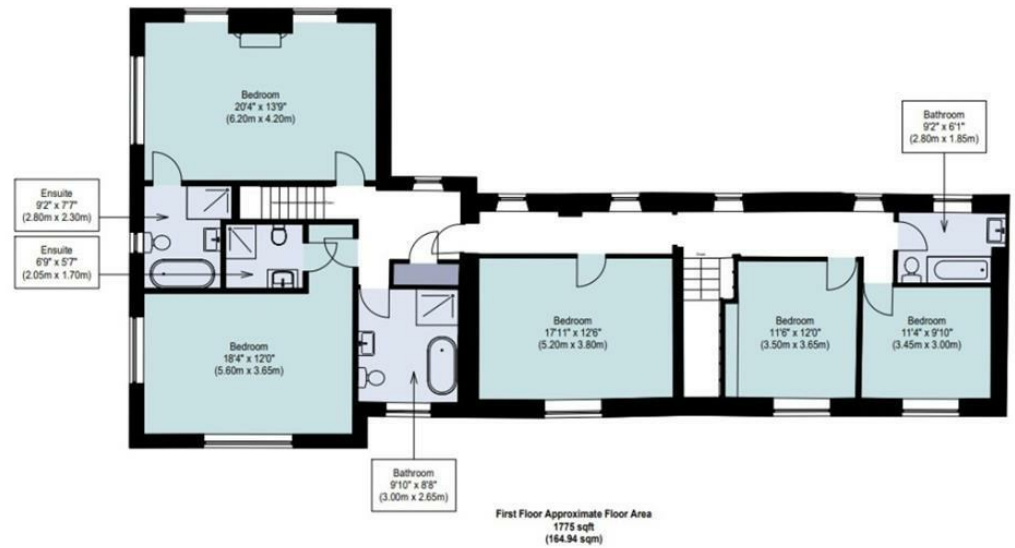
Located just moments from the centre of Ashford in the Water, one of Derbyshire's most picturesque villages, this enchanting property sits in a setting as charming as it is serene. Ashford, famed for its honey-stone cottages, medieval bridge and welcoming community, lies close to Bakewell and Chatsworth, offering a perfect blend of seclusion and connectivity.



- A stunning five bedroom/four bathroom residence
- Beautifully designed offering elegance, space and flexibility
- Finished to an exceptional standard throughout
- Perfect for family living
- Double garage and excellent off road parking
- Superb open plan dining kitchen with Aga and arched double doors opening to the rear gardens
- Master bedroom with en suite bathroom with freestanding bath
- Within a truly magical setting offering a place of tranquillity and natural beauty
- On the edge of the highly sought after village of Ashford in the Water
- Viewing: Bakewell Office







While we endeavour to make our sales particulars fair, accurate and reliable, they are only a general guide to the property and, accordingly, if there is any point, which is of particular importance to you, please contact the relevant office. The Agents have not tested any apparatus, equipment, fittings or services and so cannot verify they are in working order. The buyer is advised to obtain verification. Please note all the measurement details are approximate and should not be relied upon as exact. All plans, floor plans and maps are for guidance purposes only and are not to scale. Under no circumstances should they be relied upon as exact or for use in planning carpets and other such fixtures, fittings or furnishings. YOUR HOME IS AT RISK IF YOU DO NOT KEEP UP REPAYMENTS ON A MORTGAGE OR OTHER LOAN SECURED ON IT. 'A Life Assurance policy may be requested.' 'Written Quotations of credit terms available on request.'

Banner Cross
T: 0114 268 3241
E: bannercross@saxtonmee.co.uk
www.saxtonmee.co.uk

Hathersage
T: 01433 650009
E: hathersage@saxtonmee.co.uk

Bakewell
T: 01629 815307
E: bakewell@saxtonmee.co.uk

Matlock
T: 01629 828250
E: matlock@saxtonmee.co.uk

